




New Westminster Secondary

# Semester 2 Assembly





*We recognize and acknowledge the Qayqayt First Nation  
and all Coast Salish peoples on whose traditional and  
unceded territory we live, we learn, we play and we do our  
work.*



A warm welcome to all our  
new NWSS students and  
staff who have joined our  
Hyacks family!

---

# NWSS Administrative Team



## Left to Right

Ms. Mahli (she/her)  
Vice-Principal

Ms. Quan (she/her)  
Senior Vice-Principal

Mr. McLeod (he/him)  
Principal

Ms. Schellenberg (she/her)  
Vice-Principal

# NWSS Administrative Contacts

Mr. McLeod (he/him) E - L <a href="mailto:mmcleod@sd40.bc.ca">mmcleod@sd40.bc.ca</a>	Principal
Ms. Quan (she/her) S – Z & International Ed <a href="mailto:squan@sd40.bc.ca">squan@sd40.bc.ca</a>	Senior Vice-Principal
Ms. Mahli (she/her) M – R, SIGMA <a href="mailto:hmahli@sd40.bc.ca">hmahli@sd40.bc.ca</a>	Vice-Principal
Ms. Schellenberg (she/her) A – D, Inclusive Education Support <a href="mailto:mschellenberg@sd40.bc.ca">mschellenberg@sd40.bc.ca</a>	Vice-Principal

# Take Care of Yourself



## Counsellors

Ms. Towers  
Ms. Melvin  
Ms. Milne  
Ms. Kenny  
Mr. Mitchell  
Ms. Jagpal

## Learning Support Teachers

Mr. Bailey  
Ms. Musgrove  
Ms. Ormerod  
Mr. Bak  
Mr. Sahota  
Ms. L. Wong  
Ms. Sinclair  
Mr. Uttley  
Ms. D'Silva

## Youth Workers

Carl Lewis  
Kirsten Draney  
Kira Salim

## Indigenous Support Worker

Laura Newman

## Health Promotion & Prevention Worker

TBA



# 2023 – 2024 Counsellors

	<p>Ms. Sarekha Jagpal</p> <p><a href="mailto:sjagpal@sd40.bc.ca">sjagpal@sd40.bc.ca</a></p> <p>SIGMA Student Support</p>		<p>Ms. Jennifer Towers</p> <p><a href="mailto:jtowers@sd40.bc.ca">jtowers@sd40.bc.ca</a></p> <p>“San-Z” Student Support</p>
	<p>Ms. Marika Melvin</p> <p><a href="mailto:mjmelvin@sd40.bc.ca">mjmelvin@sd40.bc.ca</a></p> <p>“Ch - Ha” Student Support</p>		<p>Ms. Nancy Milne</p> <p><a href="mailto:nmilne@sd40.bc.ca">nmilne@sd40.bc.ca</a></p> <p>“Mat - Sam” Student Support</p>
	<p>Mr. Matthew Mitchell</p> <p><a href="mailto:mmitchell@sd40.bc.ca">mmitchell@sd40.bc.ca</a></p> <p>“A-Ce” and International Student Support</p>		<p>Ms. Erin Kenny</p> <p><a href="mailto:ekenny@sd40.bc.ca">ekenny@sd40.bc.ca</a></p> <p>“He - Mas” Student Support</p>



# School Counsellors

Use this QR code to book an appointment with your counsellor.



- Support for academic, social, and mental health needs
- By appointment or drop in at lunch time





# NWSS School Supervision

Ms.  
Fielding

Ms. Hall





EA Team





## NWSS Mission Statement

Our mission at New Westminster Secondary School is to develop responsible citizens and lifelong learners who respect learning, the environment, themselves and others.



*Welcome to*

**NEW WESTMINSTER SECONDARY**

**HOME OF THE HYACKS**

**Let's Love The Space We Call Home!**



# OUR HALLWAYS



Our goal is to ensure that the hallways at NWSS are clean and clutter-free, providing students with ample space to move around with ease. Additionally, we want to foster a comfortable and inviting atmosphere by encouraging the use of respectful language and conversing at appropriate volumes.



# OUR WASHROOMS

To ensure NWSS washrooms are comfortable and clean, they need to be substance free, well stocked and have working facilities - not a place to hangout!





# THE GRAND COMMONS



NWSS Grand Commons will be socially positive with respectful conversations and individuals cooperating and collaborating.





# KEEP IT CLASSY

NWSS students at school events will be respectful to speakers/guests by engaging in the event by being quiet during the presentation and cheering/clapping when appropriate.



**REMEMBER: MANNERS MATTER!**





Respect yourself and others

Respect Learning

Respect the Environment

# Code of Conduct



# Standards of Behaviour

All members of the school community must:

- Respect differences in people
- Resolve conflicts and disagreements while treating everyone, including yourself with dignity and respect
- Show care and respect for school property and the property of others
- Respect the need of others to work in an environment that is conducive to learning and teaching



# Standards of Behaviour

All members of the school community must not:

- Engage in any form of bullying, cyberbullying, harassment, intimidation, threatening or violent behaviours
- Commit sexual harassment or assault
- Be in possession of weapons, alcohol or illegal drugs
- Be under the influence of alcohol, cannabis or illegal drugs
- Commit an act of vandalism that causes damage to school or personal property
- Cheat and/or plagiarize





## Responsible Usage of NWSS Spaces

Alcoves

Grand Commons

Collaborative Learning Spaces

Library



Do you have a study block? Or are you enrolled in an Online course?

Online students are encouraged to work in the online classroom. Students on study block are to use the Grand Commons and/or Learning Commons and/or Alcoves.





# Collaborative Spaces

Collaborative spaces are for classes to break out of their room and have students work together; they are NOT for students with no class, an online class, or a study block.





Students Washrooms  
and  
Vape Detectors



NWSS  
Students In  
Our  
Community





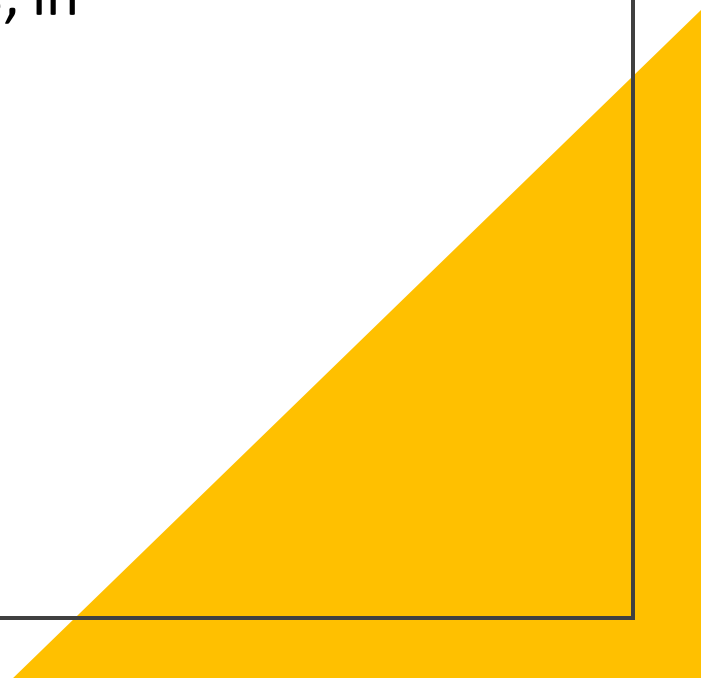
## Bring Your Own Device (BYOD)

- Personal electronic devices can be valuable resources for learning
- BYOD is a program at NWSS that allows students to bring their own device for learning at school
- BYOD are subject to district and school expectations
- The district and school is committed to equity and those who do not have their own devices will have access to one at school. A NWSS group has been created with staff and students to improve access.




# BYOD

Electronic devices should only be used at appropriate times, in appropriate places and in appropriate ways



# BYOD Expectations

- Devices are to be placed in your backpack or secured in a locker, unless being used for learning activities
  - Devices are not be used without teacher permission
  - Always mute your device sound unless your teacher gives permission otherwise
  - Devices may only be used for learning activities during class time. Only work on the tasks assigned by your teacher
  - Your use of electronic devices must always follow the School Code of Conduct
  - Any use and personalization of devices (backgrounds, skins, screensavers) must be school appropriate and follow School Code of Conduct
- 
- A large yellow triangle is positioned in the bottom right corner of the slide, pointing towards the top right.



# BYOD Expectations

- Should you not follow expectations related to your device you can expect:
  - Education regarding responsible use of technology
  - Your teacher to collect your device and turn it in to the office
  - Your device be returned after meeting with an administrator in the office
  - Disciplinary action, including written warnings, withdrawal of access to technology privileges, and, in extreme cases, suspension or expulsion

*The district has the right to access any files on your device in the case of misuse, suspicion of misuse, or other activities in violation of the district's Code of Conduct*

# Erase/Report It!

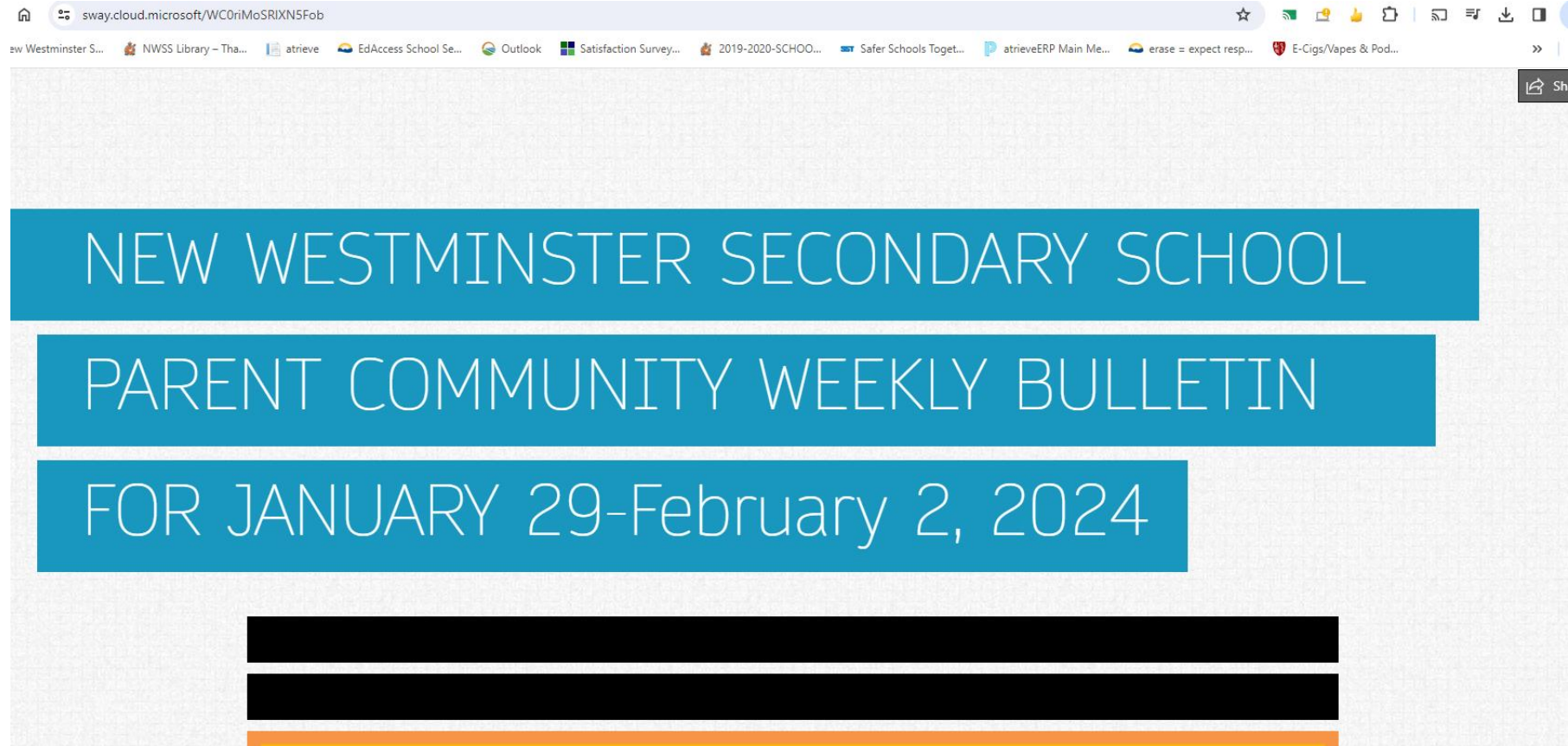
---

'Erase/Report It' is a tool that lets you send a secure, anonymous and confidential message to our school's safe school coordinator, who will follow up on it right away. You do not have to provide your name unless you want to. **IF YOU SEE SOMETHING, SAY SOMETHING!**

---



# Friday Parent Community Weekly Bulletin



# Reporting your absence from classes or if you have to leave NWSS early for an appointment

The screenshot shows the New Westminster Secondary School website. The header includes the school logo, name, and tagline 'Home of the NWSS Hyacks'. There are links for 'MyEdBC Family Portal' and 'Fees & Forms'. A search bar and a language dropdown menu are also visible. The main navigation menu includes 'About Us', 'Departments & Programs', 'Library', 'Students', 'Parents', and 'Contact Us'. The 'Contact Us' page is active, showing a dropdown menu with options: 'General', 'Staff Contact Information', 'Registration', 'Report a Student Absence', 'Facility Rentals', 'Reporting an Incident', 'Connect With Us (Social Media)', and 'Direct Email Form'. The 'Report a Student Absence' option is highlighted. The main content area has the heading 'NWSS - Reporting a Student Absence' and the following text: 'Our NWSS team asks that parents and guardians call the school in the case of a student absence, before the start of a the school day. This helps us ensure that you have given permission for your child to be absent, and supports our staff in accurately tracking and following up.' Below this, it says 'Absences can be reported:' followed by two bullet points: '• 24 hours a day through our voice message system at 604-517-6391. If you are leaving a voicemail message, please state the student's full name, grade, the date of the absence, the reason for absence, and, if possible, their student number.' and '• or they can be made any time in advance, or before 9:45am on the day of the absence, using the form below.' The page ends with 'Thank you!'.

Your parents/guardians are the only people permitted to report your absence, before the start of the school day.

**Absences can be reported before 9:45am:**

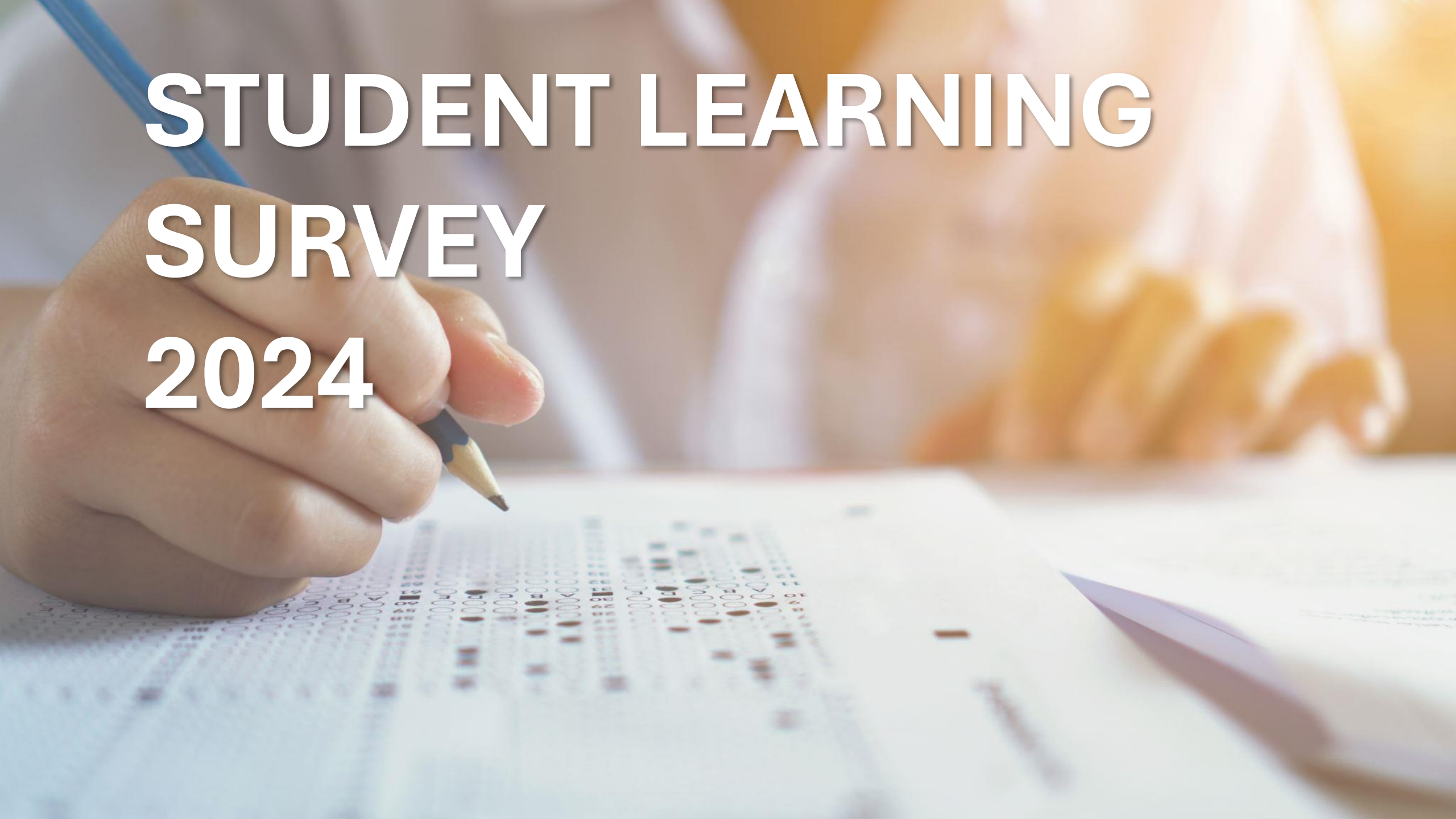
•24 hours a day through our voice message system at 604-517-6391

•Using this Microsoft Form on our school website

•You must sign out of the office before you leave NWSS



# STUDENT LEARNING SURVEY 2024



# What is the Student Learning Survey?

**THE STUDENT LEARNING SURVEY (SLS) HAS BEEN ADMINISTERED EVERY YEAR IN B.C. PUBLIC SCHOOLS SINCE 2001.**

**PROVIDES FEEDBACK ON THE IMPLEMENTATION OF THE CURRICULUM CHANGES, LEARNING ENVIRONMENT, STUDENT WELLNESS AND SATISFACTION, STUDENT BELONGING AND ENGAGEMENT, AND CAREER PREPARATION**





## Let's Get Started...



This survey is a group of questions to find out what you think. It's **NOT** like a test because there are no right or wrong answers.



When answering this survey, only look only at your own survey. The best answer is how **YOU** feel. It is really important that you think about the questions and give honest answers.



**Time:** 25 to 30 minutes



**Logon #:** 9 (nine) digit Personal Education Number (PEN)

# Let's Get Started...Don't know your PEN?

## GO TO:

BRITISH COLUMBIA MyEducationBC

myeducation.gov.bc.ca

**MyEducation BC Prod**

**MyEducation BC Login ID**

[Request an account](#)

**MyEducation BC Password**

[Login Information](#) [I forgot my password](#)

[Log On](#)

**Login using BC Services Card below**

Enterprise



# Let's Get Started...Don't know your PEN?

## GO TO: *MY INFO* ON THE TOP TAB

**Pages** My Info Academics Groups Calendar Locker

Welcome to MyEducation BC PRODUCTION

BRITISH COLUMBIA MyEducationBC

One Student.  
One Record.  
All of British Columbia.

**To Do**

Overdue Online Assignments  Tomorrow  Today [Week View](#)

Overdue Online Assignments	Assignment	Category	Due
No assignments scheduled.			

**Today: Saturday, January 27**

Course	Assignment	Category	Completed
No assignments scheduled.			

**Tomorrow: Sunday, January 28**

Course	Assignment	Category	Completed
No assignments scheduled.			

**System Maintenance & Announcements**

### Welcome to MyEducation BC PRODUCTION

#### MyEducation BC Analytics Transition from OBIEE to Power BI

As of September 1, 2023, School District MyEducation Analytics OBIEE services and access will be retired and transitioned to Power BI. See the L1 information station for further details and instructions for requesting access to Power BI.

#### 6.6 Major Release

The 6.6 major release is now available in Production.

#### Weekly Maintenance Windows - Outages may be required

Every Wednesday from 6:00 to 11:00 pm and every Sunday from 6:00 to 11:00 am. If outages are required, the Production environment will be unavailable during these windows.

**Published Reports**

# Let's Get Started...Don't know your PEN?

## FIND

The screenshot shows a student portal interface. At the top, there is a navigation bar with tabs for 'Pages', 'My Info', 'Academics', 'Groups', 'Calendar', and 'Locker'. Below this is a 'My Record' section. On the left, a sidebar menu lists various options: 'My Details', 'Transcript', 'Current Schedule', 'Contacts', 'Attendance', 'Assessments', 'Notifications', and 'Requests'. The 'My Details' section is active, showing a 'Demographics' tab. A red arrow points from the 'Requests' menu item to the 'Personal Education Number' field in the 'Demographics' section. The 'Personal Education Number' field is highlighted in yellow and contains a question mark icon. Other fields in the 'Demographics' section include 'Usual first name', 'Usual middle name', 'Usual last name', 'Suffix', 'Pupil #', 'Homeroom', and 'Locker'. To the right of these fields are additional fields: 'School > Name', 'Next School > Name', 'Year of graduation', 'Grade level', 'Parking Space', and 'License Plate #'. There are 'Options', 'Reports', and 'Help' buttons at the top of the 'My Details' section, and a 'Cancel' button at the bottom.

Field	Value
Usual first name	[Redacted]
Usual middle name	[Redacted]
Usual last name	[Redacted]
Suffix	[Redacted]
Pupil #	123456789
Personal Education Number	[Redacted]
Homeroom	HS (28)
Locker	[Redacted]
School > Name	[Redacted]
Next School > Name	[Redacted]
Year of graduation	[Redacted]
Grade level	[Redacted]
Parking Space	[Redacted]
License Plate #	[Redacted]



# Let's Get Started on Survey...

GO TO [WWW.NWSS.CA](http://WWW.NWSS.CA) – SCROLL DOWN TO NEWS & EVENTS

CLICK ON STUDENT LEARNING SURVEY 2024

CLICK ON THE LINK: [WWW.RCED.GOV.BC.CA/SAT\\_SURVEY/ACCESS\\_HTM](http://WWW.RCED.GOV.BC.CA/SAT_SURVEY/ACCESS_HTM)  
Logon

Students

- A logon number from your school is required in order to access the appropriate online survey.

District

Logon #

Language

# QR Code and Link



[WWW.BCED.GOV.BC.CA/SAT SURVEY/ACCESS.HTM](http://WWW.BCED.GOV.BC.CA/SAT_SURVEY/ACCESS.HTM)