

NWSS SCHOOL GROWTH PLAN

(2017/18)

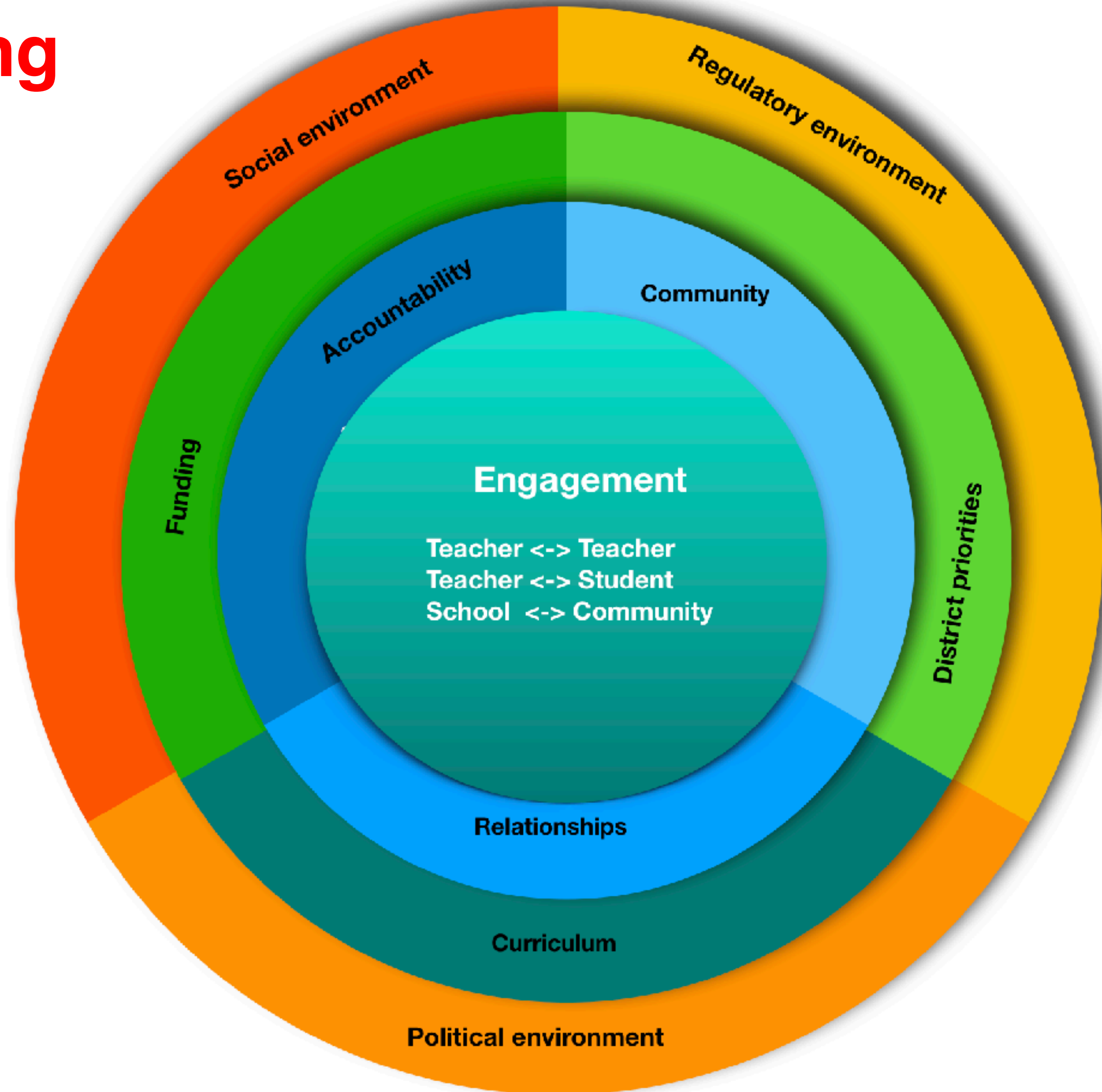
A Learning Transformation Plan

DREAM

We strive to continue offering the quality programs we've developed at NWSS. In the midst of curriculum change and societal realities that impact how we've delivered learning up to now, we seek both to understand the knowledge and skills our students will need in the future, and how to facilitate the acquisition of those skills in the best ways. To that end, we wonder:

In which ways do our professional learning opportunities mirror learning for our students ?

Transforming Learning at NWSS



Appreciative Inquiry: Design

Engagement for us is a personal investment in learning that is fuelled and nurtured through:

Relationships

Clear accountabilities

An extended community of learning

We see these factors as separate *and* related. However, as our relationships become more developed, we can build in a culture of accountability. Furthermore, relationships are the cornerstone of community involvement.



RELATIONSHIPS

Current state

Focus and Actions

Outcome

Teacher-Teacher

Enhance professional relationships
Professional learning communities

Student-Teacher

Flexible learning spaces
Open Learning Days
Student Voice forum

Moments of connection:
adhoc and opportunistic engagement

YCW
Counselling

Student-Parent

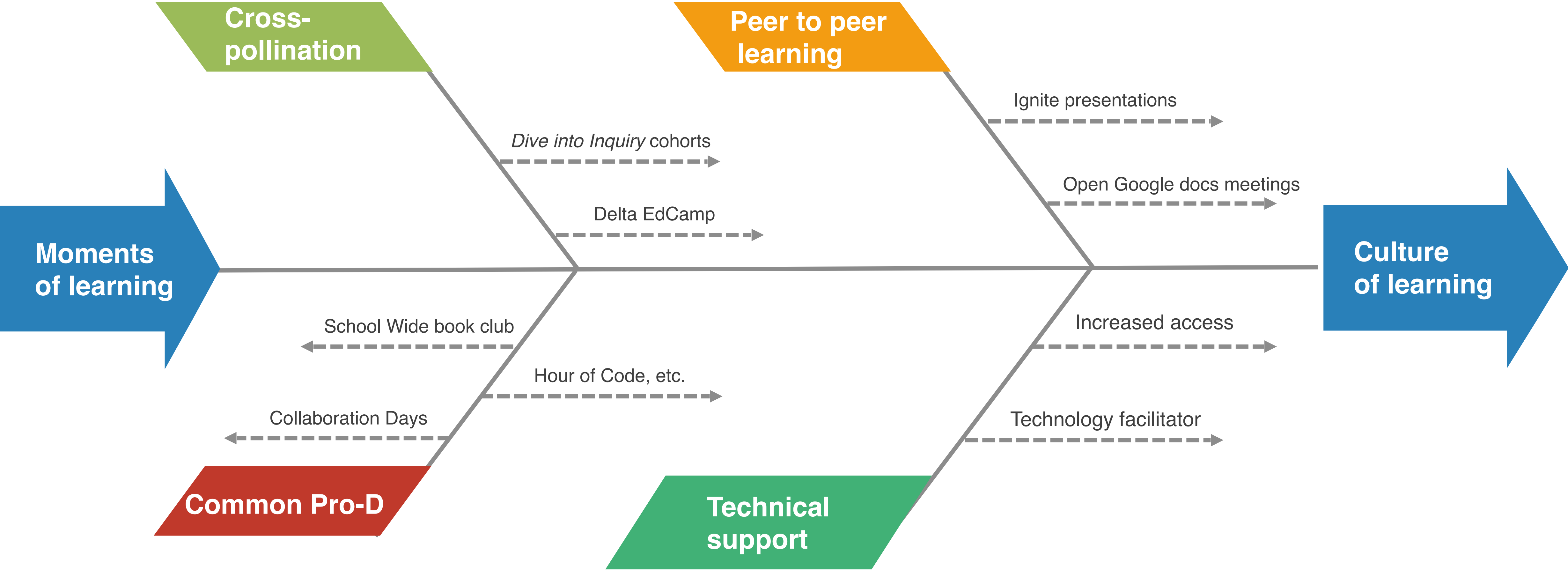
Ask a Principal
Ask a Parent

School-Community

Sharing,
Trusting,
Supportive environment
for engaged learning



TEACHER-TEACHER RELATIONSHIPS



PROFESSIONAL LEARNING COMMUNITIES

Creating an environment for success:

We believe that the best way to encourage life-long learners is by embracing an culture where the teachers lead by example.

Professional Learning Communities is the intentional planning for reflective practice, inquiry, and collaboration. We believe that a strong professional community of learning sets the groundwork for a school-wide community of learning.

STRUCTURES TO ENHANCE PROFESSIONAL RELATIONSHIPS

Supportive Organization

Administrative team distributes and organizes opportunities for learning

Common Pro-D day planned and structured

District Innovation Grants

Supportive Structure

Technology training

Common Book Club

Ongoing education and learning through Collaboration Days

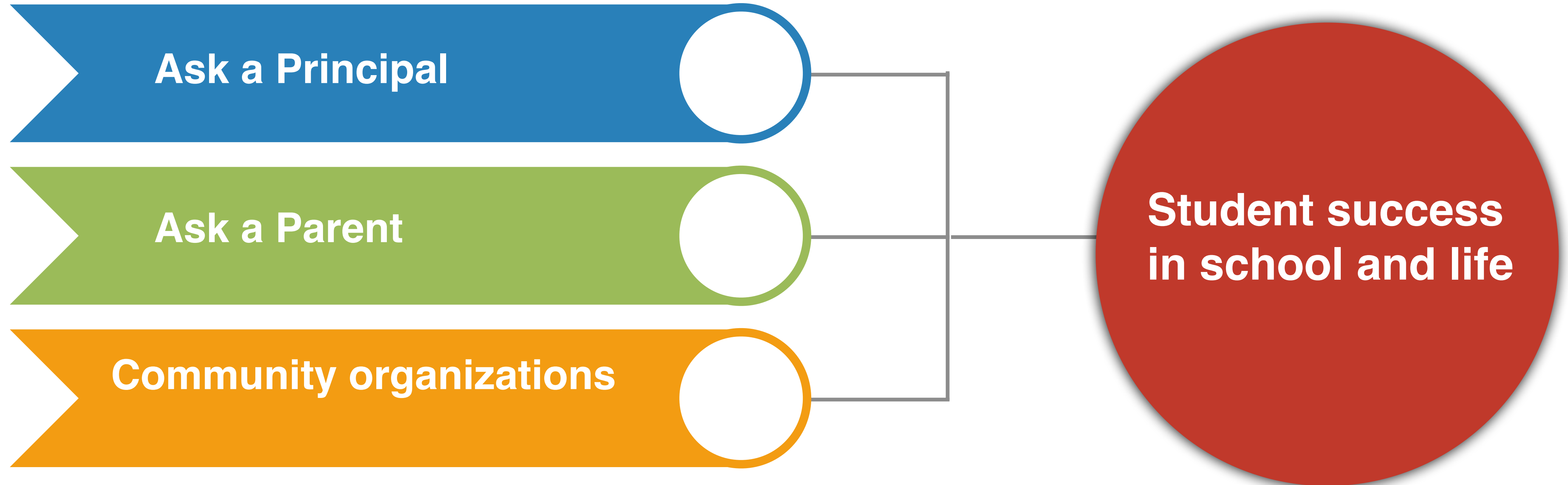
Supportive Culture

Appreciation of teacher autonomy and Department Goals

Ignite Talks and other moments for individuals to be recognized

Mentorship / Orientation program for new staff

SCHOOL-COMMUNITY RELATIONSHIPS



SCHOOL-COMMUNITY RELATIONSHIPS

The image shows a mobile application interface for 'Ask a Principal'. At the top, there is a dark navigation bar with a back arrow, the title 'Ask a Principal', a folder icon, a star icon, and a 'SEND' button. Below this is a white content area with two tabs: 'QUESTIONS' (selected) and 'RESPONSES'. The main heading is 'Ask a Principal'. Below the heading is a paragraph: 'Do you have a question you'd like the Principal or a Vice-Principal to answer? Type your question below and we will try to answer it in a new video and FAQ feature we are creating for our Website - "Ask a Principal".' The form includes a 'First Name' field with a red asterisk and a 'Short answer text' input. Below that is a question 'How are you connected to our community?' with a red asterisk and three radio button options: 'Student', 'Staff', and 'Parent'. On the right side of the form, there is a vertical toolbar with icons for adding content, text, images, video, and a list icon.

← Ask a Principal ☆

SEND

QUESTIONS RESPONSES

Ask a Principal

Do you have a question you'd like the Principal or a Vice-Principal to answer? Type your question below and we will try to answer it in a new video and FAQ feature we are creating for our Website - "Ask a Principal".

First Name *

Short answer text

How are you connected to our community? *

Student

Staff

Parent

+
Tt
🖼️
▶️
☰

CREATING A COMMUNITY OF LEARNING

Current
state

Focus and Actions

Outcome

NWSS is a
unique
entity

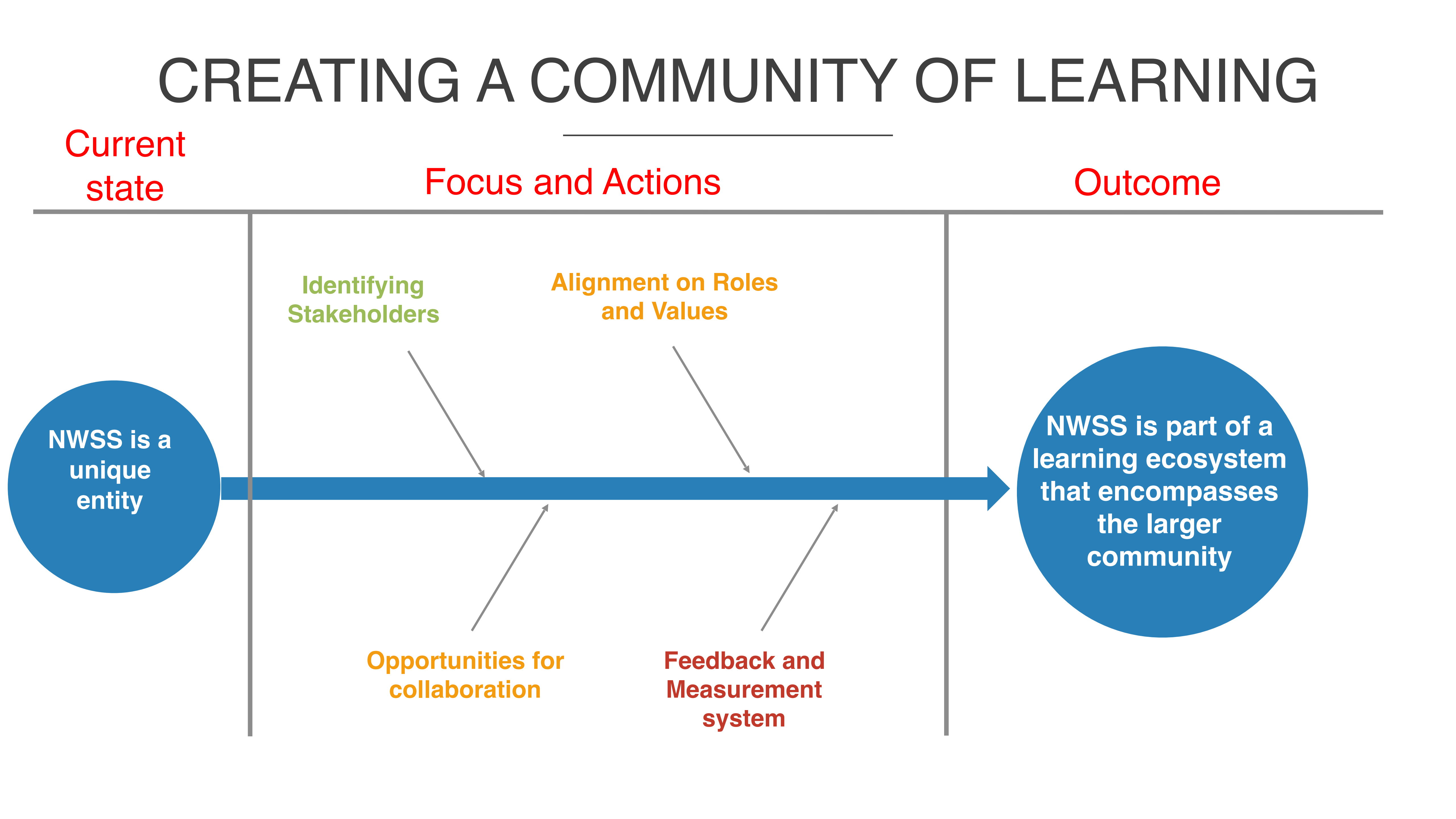
Identifying
Stakeholders

Alignment on Roles
and Values

Opportunities for
collaboration

Feedback and
Measurement
system

NWSS is part of a
learning ecosystem
that encompasses
the larger
community



ACTIVITIES TO CREATE THE LEARNING COMMUNITY

Learning from others

Engaging with other Schools and Districts, e.g. Burnaby

Reaching out to Indigenous, ethnic, educational organizations etc., to understand and leverage “non-traditional” learning

Reaching out to local community, non-profit, and business groups to better align NWSS programs and practices with needs

Engaging Stakeholders

Expanding Ask a Principal to Ask a Parent

Sharing the Framework for understanding, feedback and collaboration in building it out

Extending Collaboration Days to the larger community

Community Outreach

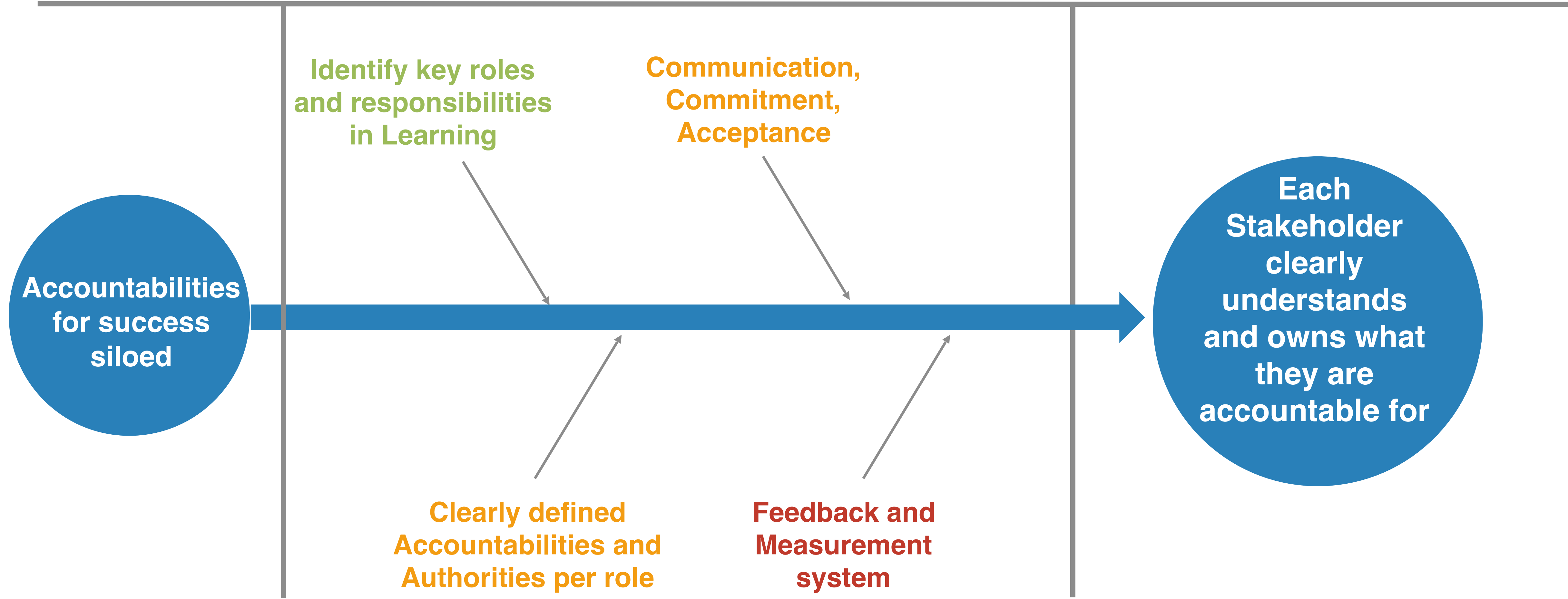
NWSS as an active presence in community events

ACCOUNTABILITY

Current
state

Focus and Actions

Outcome



ACCOUNTABILITY METRICS

| | | |
|--|---|--|
| Common Pro-D days structured and planned | Ignite talks every Staff meeting | Open Google Docs for collaboration and feedback gathering |
| School-based committees ie: Technology, Assessment, Reconciliation | Mentorship for new Staff | Student data:Less Withdrawn standings; Less student spare blocks; monitor graduation rate and retention. |
| Increase in participation numbers for school-based Pro-D events | Uptake of Common Book Club | Redesign Collaboration Days so the days are more balanced throughout the year. |
| Engagement in the Ask a Principal forum | Community organizations visible in the school | Ask-a-Parent initiated and embraced |

NEXT STEPS

Communicate

Within NWSS

District

Parents

Leverage Feedback

Tweak and expand actions in each focus area

Ongoing communication of changes to seek further feedback

Continual Action

Identify and focus on the critical activities required to create the foundation for further growth

Regular review sessions to ensure on right track: course correct if required